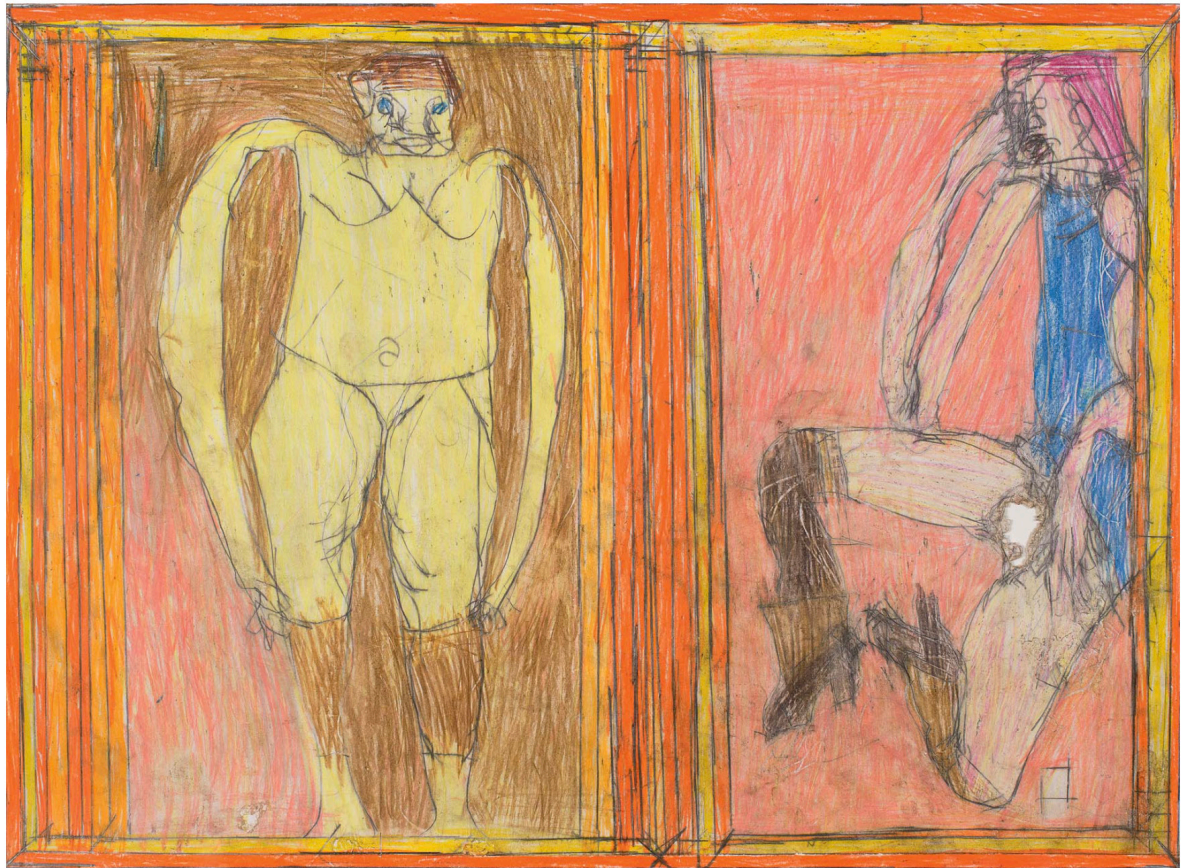


HOFER Josef

1945 . wegscheid . allemagne

Malgré un handicap mental et physique (sourd de naissance et quasiment muet) qui a poussé son père à le couper de la société pendant près de quarante ans, Josef Hofer affiche une forte personnalité. Il a développé un style de dessin qui mêle une forme enfantine à des représentations érotisées, narcissiques, voire exhibitionnistes. Il a installé dans sa chambre un miroir qui lui permet de reproduire ses reflets. Certaines de ses images semblent vouloir s'échapper des limites de la feuille, compartimentée de cadres jaunes et oranges.

Hofer was born with a mental and physical handicap (he is deaf). He spent his childhood and youth isolated on the family farm and part of his adult life in institutions. In 1997, he began to engage in drawing at the Lebenshilfe drop-in center in Ried. An important moment in his artistic career was when he discovered his sexually aroused body in the mirror. He transfers his auto-erotic experiences onto paper and, with narcissistic pleasure, identifies with male nudes from photo-erotic catalogues. He places the predominantly male figures into colorful frames that define the figure's position and force it into unnatural positions. Hofer repeats one theme in multiple series in which the individual drawings differ only in subtle nuances.



TECHNIQUE: crayon de couleur sur papier

DIMENSIONS: 44 x 60 cm

DATE: vers 2010